

Manual of DCP program

Thank you for watching!



Luxury Quality·For brands·Scientific protection·Driving without worried

Add: No.198,Huoju 3rd Road,Nanchang,Jiangxi · China
Tel: 400-809-3011
Web: www.uppf.com

UPPF

CONTENT

Copyright Declaration	1
Contact	2
Installation of DCP program	3
DCP Usage	
Startup	8
Installation of plotter	10
Choose width of film	11
Edit the pattern	12
Move,delete sensor or logo	13
Save pattern	14
Automatic typesetting	15
Segmented output cut	16
Introduction of Partial functional key	18

Copyright Declaration

Without the formal permission of our company, any relevant technical information in the software shall not be transported in any form. The software can only be used with the relevant license or under the terms permitted by the relevant certificate. The information is only applicable to this manual, and the change of information will not be notified separately. We do not guarantee that the information in the software is absolutely accurate. Our company is not responsible for any loss caused by inaccurate or wrong information during the use of the software.

Nanchang AIKA Trading Co.,Ltd

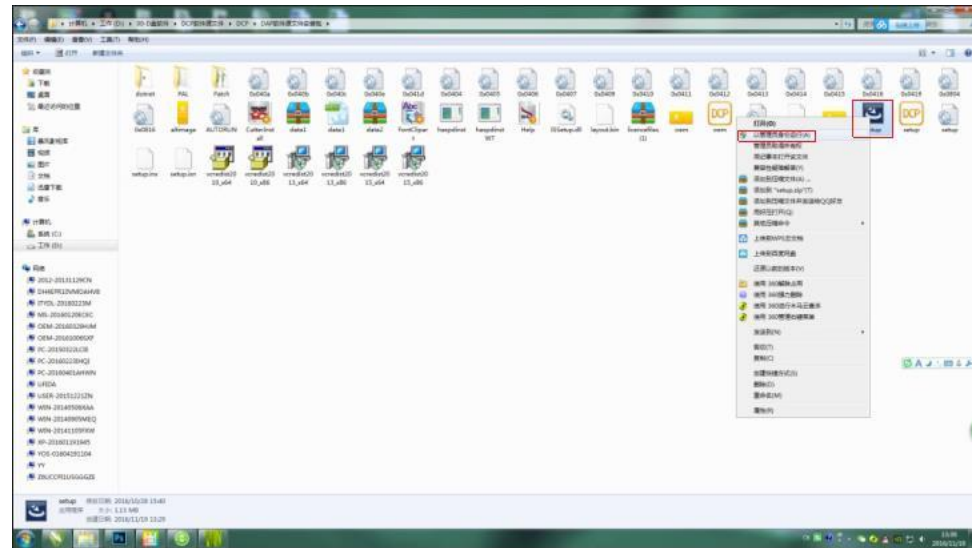
More information,pls contact us:

Hotline:400-809-3011

Company tel:0791-88108675

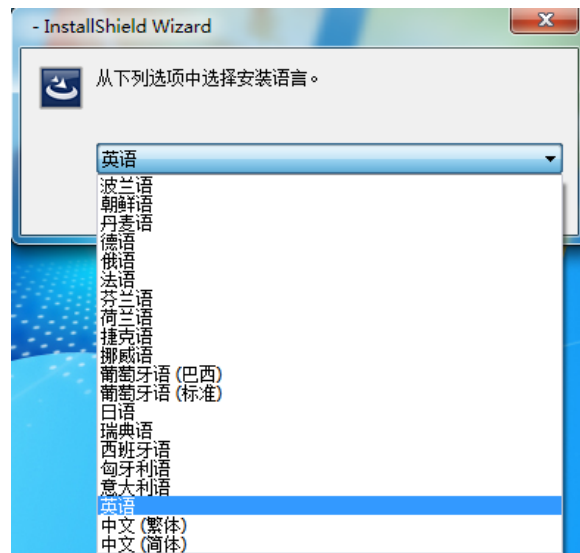
website:www.uppf.com

Installation of DCP program



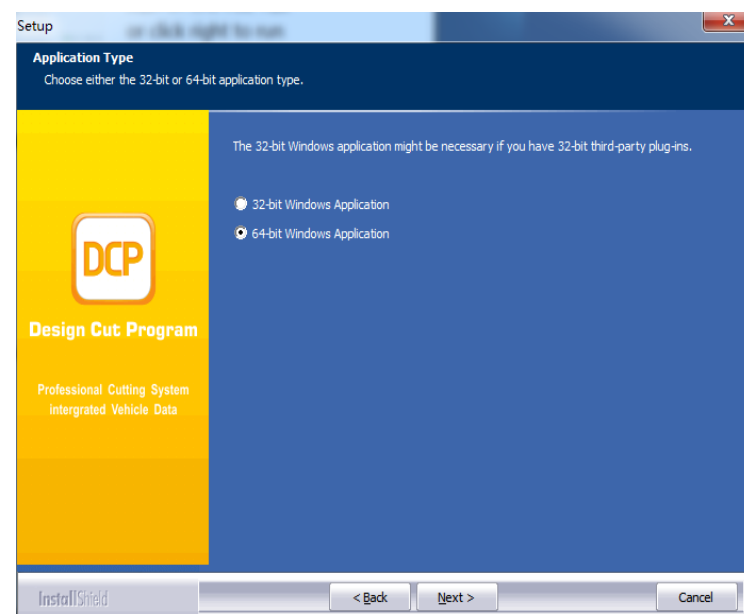
/01

Double click the icon
in the red box or click
right to run as
administrator
Install DCP software



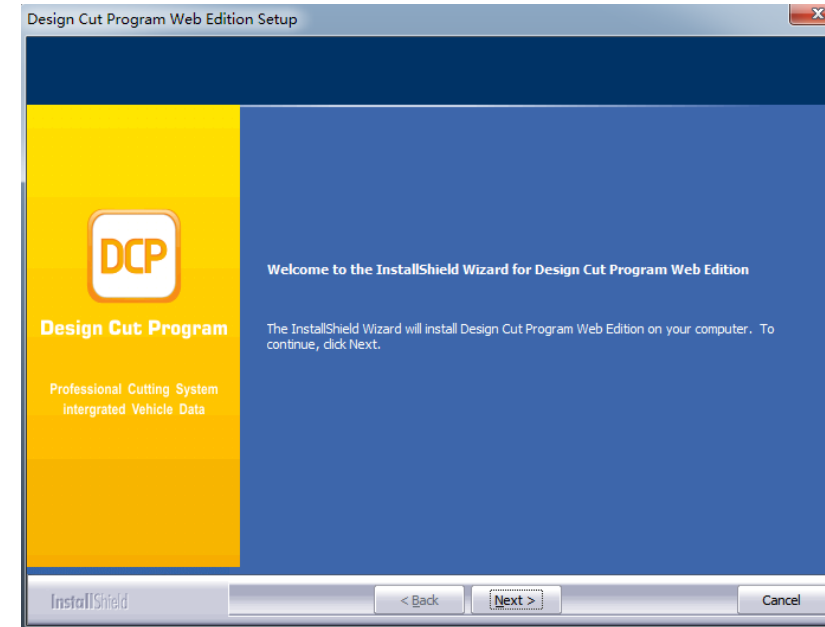
/02

Choose language



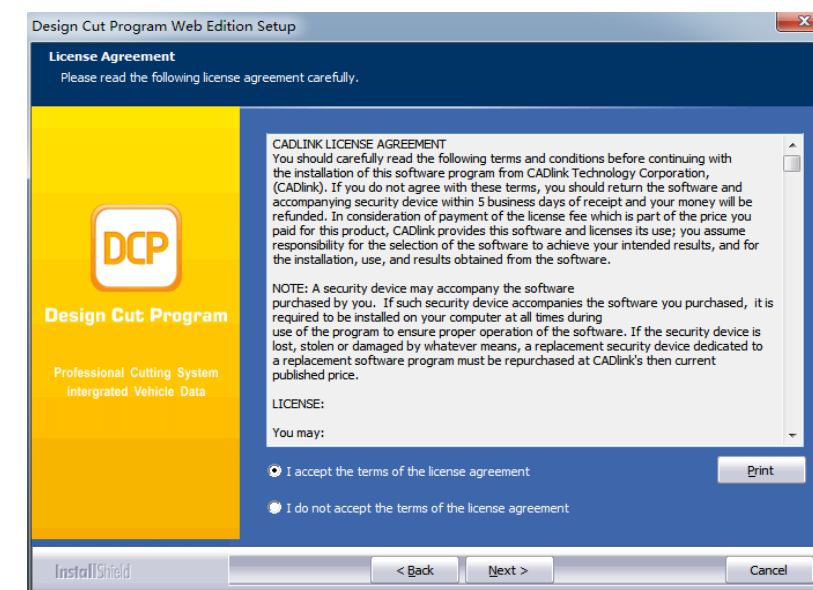
/03

Choose system
According to your own competer [32bit] or
[64bit]
Click [next] to install



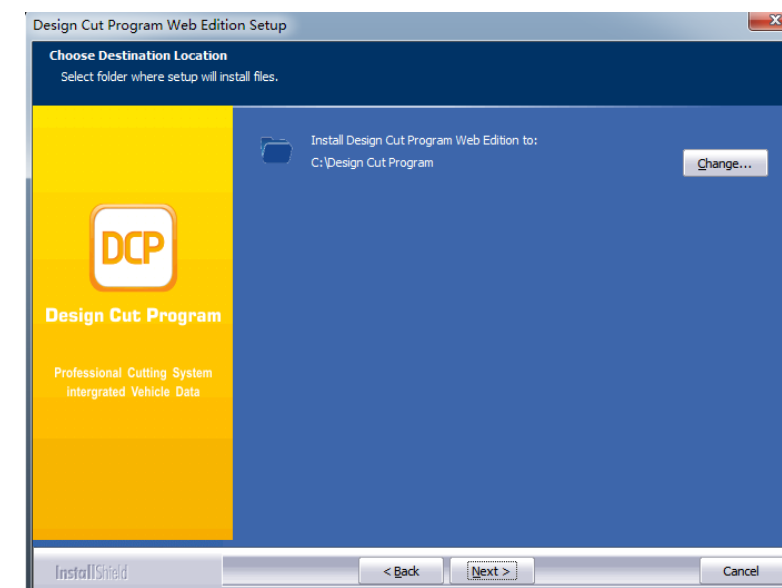
/04

Welcome to install
Click [next] to install



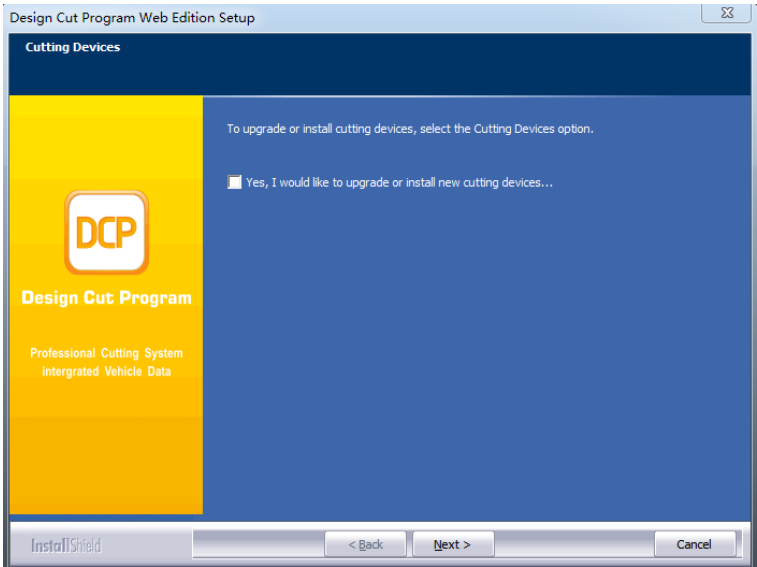
/05

Choose [accept]
click [next] to install



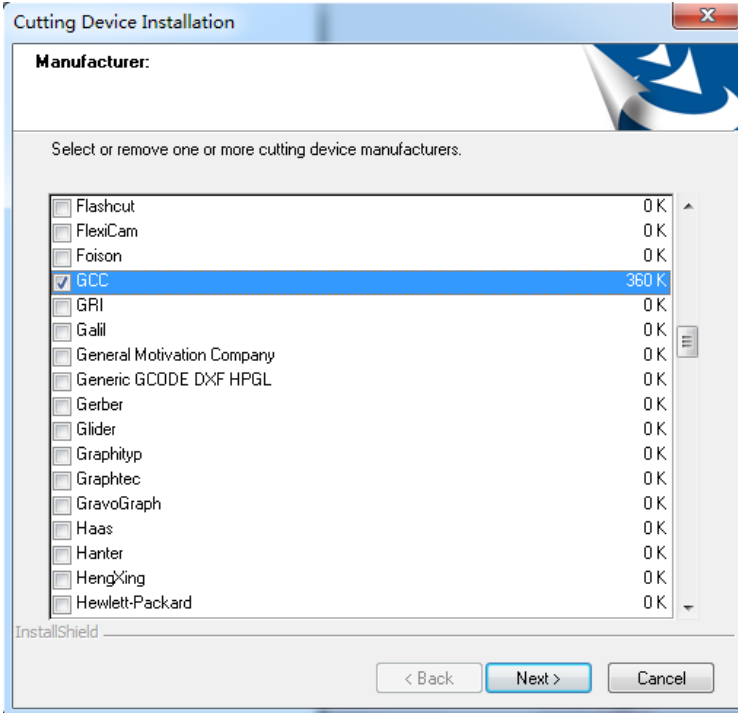
/06

Installation path
Click [change] to change installation path
click [next] to install



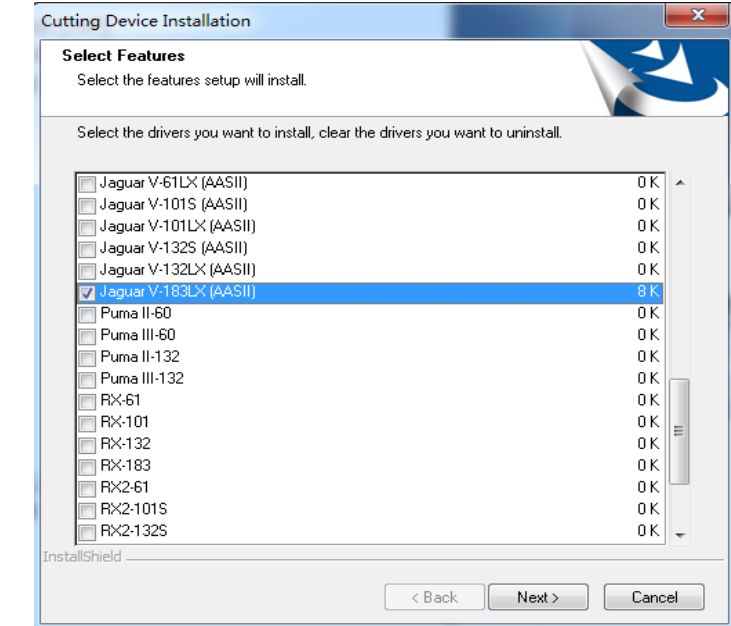
/07

Load plotter
Choose [yes]
Click [next] to install



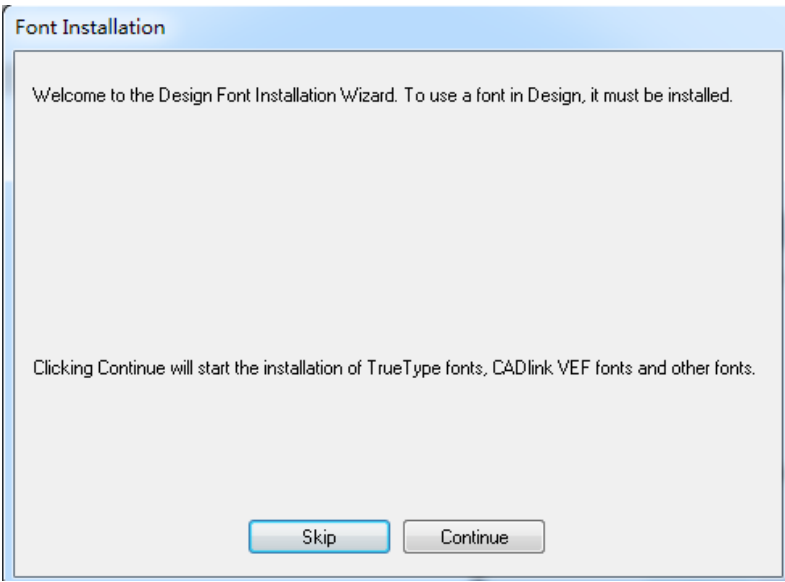
/08

Cancel default brand [HP]
Choose [GCC] or your brand
Click [next] to install



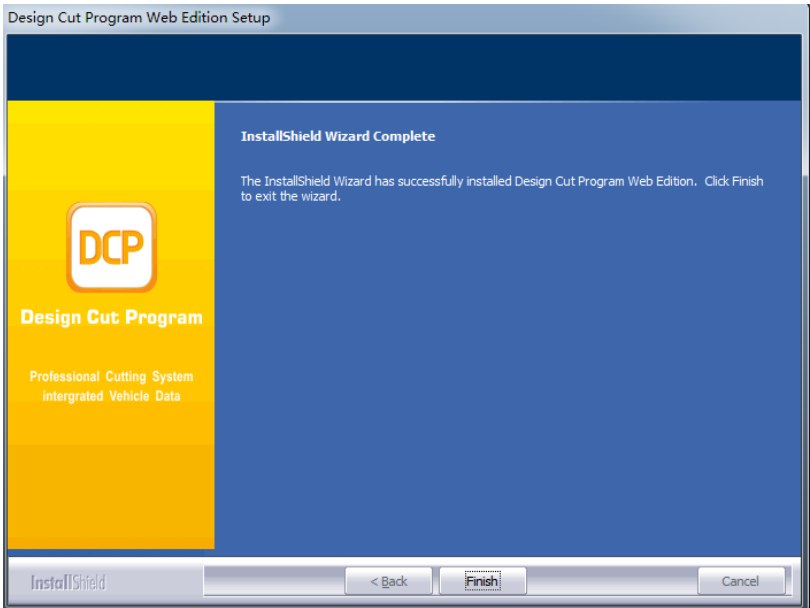
/09

Click [next] to install
Choose the model [Jaguar V-183LX(AASII)]



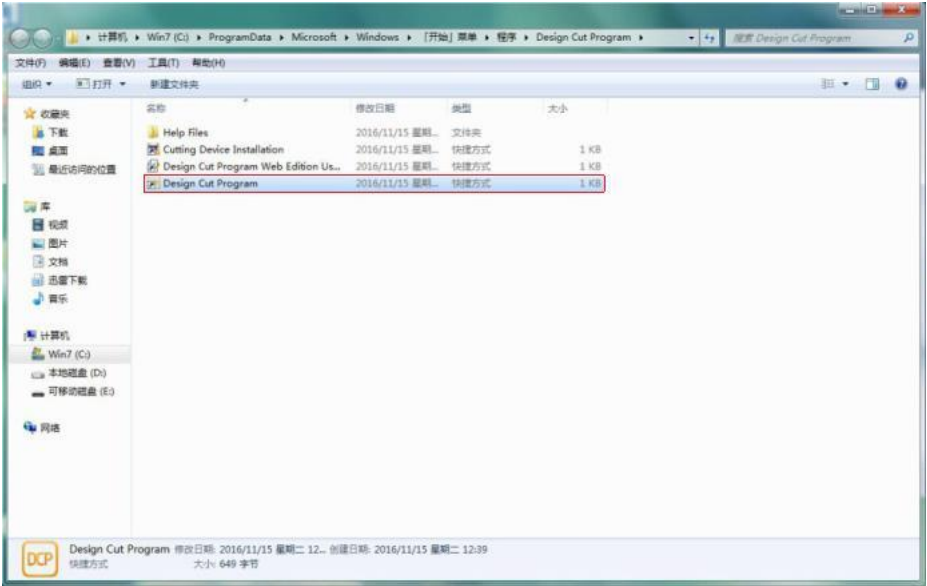
/10

Installation of fonts
Click [continue] to install



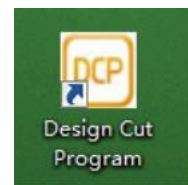
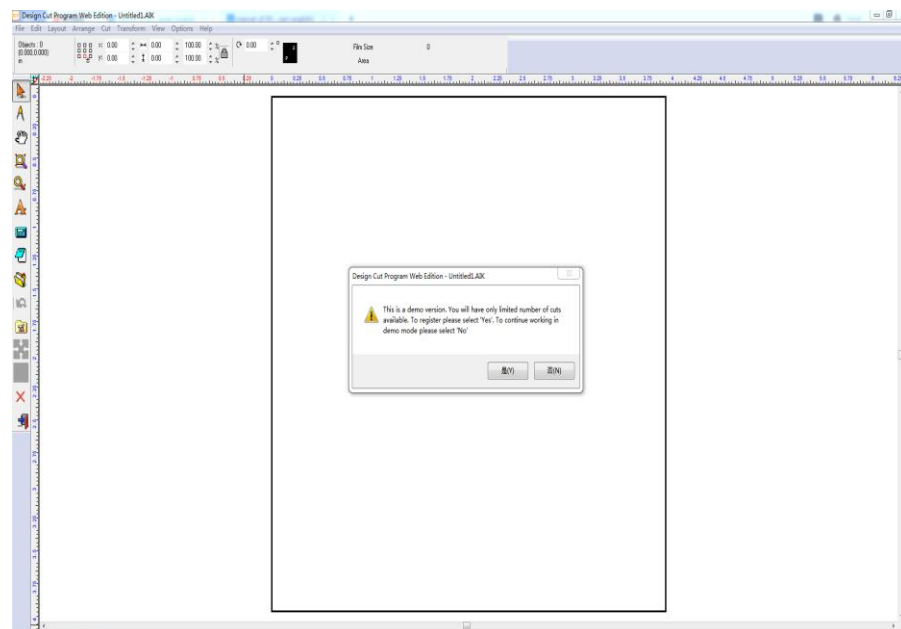
/11

Installation finish
Click [finish]



/12

Send shortcut to desktop



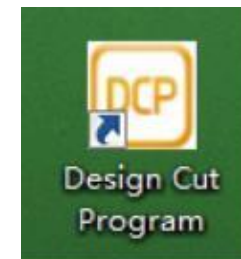
/13

Double click icon of DCP program to open it

Click [yes] to register

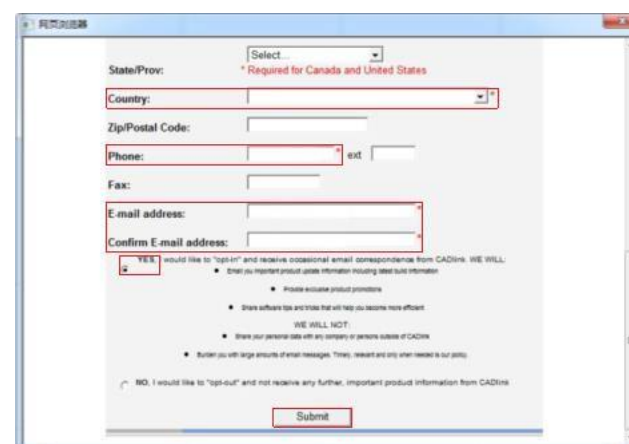
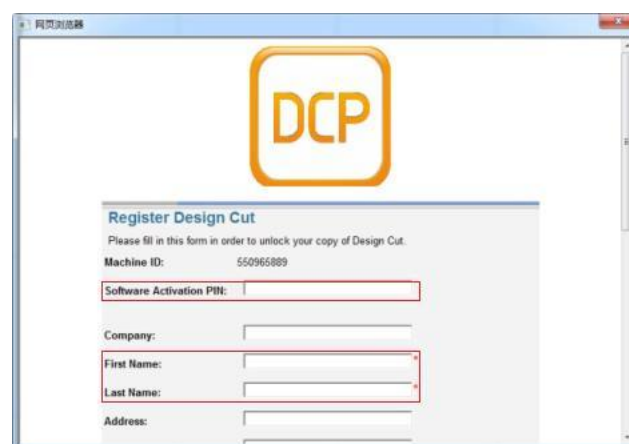
Start up

Usage of DCP program:



/1

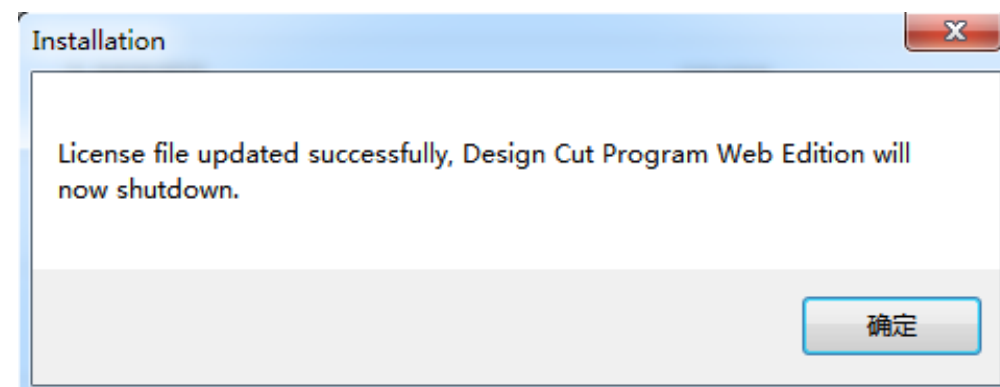
Click the icon of DCP on the desktop or programs menu to start up



/14 Fill in registration information (with*is required), activation PIN code will be provided by our company

Email address is login account, password will be sent to this mailbox after registration

Choose [Yes], click[Submit] then finish registration



/15 Click [confirm] to close the software after registration

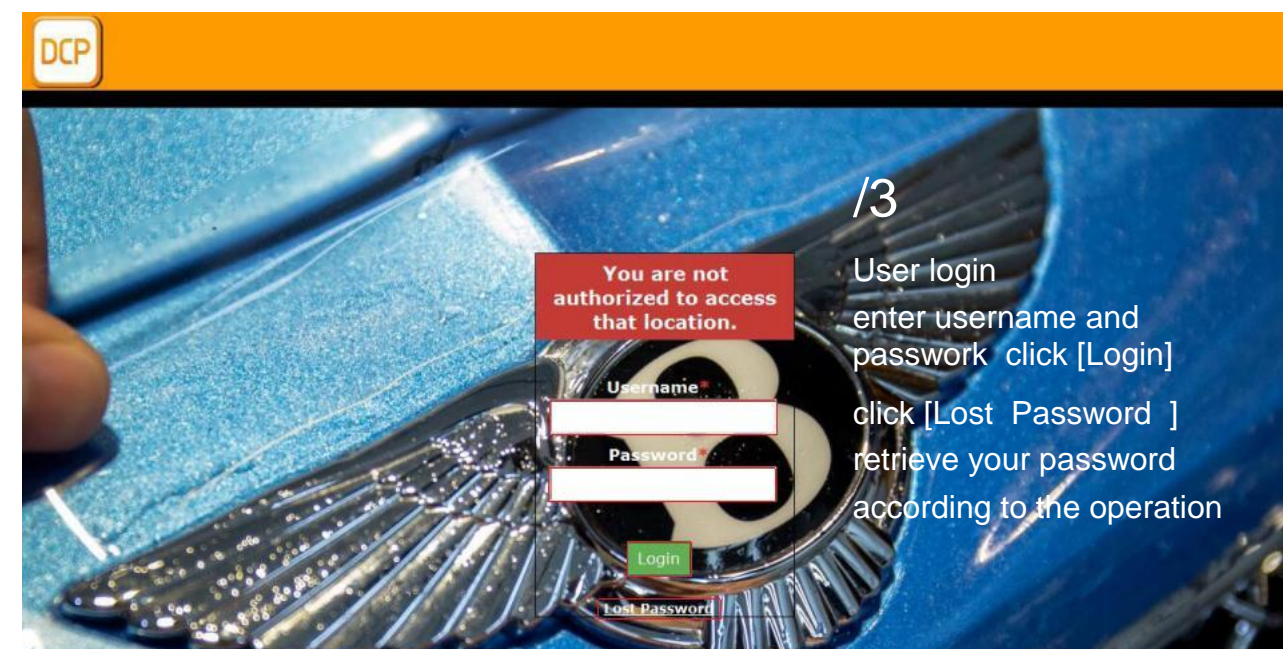


/2

It needs several seconds to start up DCP program

Loading as left

*computer must always be connected to internet



/3

User login

enter username and password click [Login]

click [Lost Password] retrieve your password according to the operation

DCP

Find Template

My Profile

Logout

Library	Year	Make	Model	Trim Level	Type	
North America	2017	PORSCHE	718	-- Pick a Trim --	-- Pick a Type --	
1-708392c	2017-Current	PORSCHE	718	boxster		Q↓
1-707041em	2017-Current	PORSCHE	718	boxster S		Q↓
1-358445kv	2017-Current	PORSCHE	718	cayman		Q↓
1-547415gw	2017-Current	PORSCHE	718	cayman S		Q↓

DCP

Find Template

My Profile

Logout

Update your profile

Delete

Cancel

Password*

Password Confirm

Security Question*

What is your software PIN number?

Security Answer*

8644845204

Update Profile

- /4

Change password

Click picture 1 [My Profile] to enter the page to change your password

Picture 2 enter new password and confirm it.click [Update Profile] then finish changing password

Web Open

DCP

Find Template

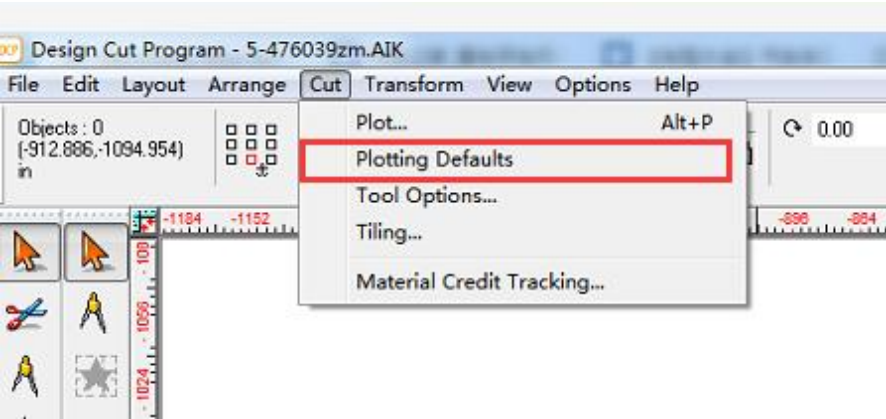
Library	Year	Make	Model	Trim Level	Type	
North America	2020	BMW	X7	-- Pick a Trim --	-- Pick a Type --	Q↓
1-308564cd	2016-Current	BMW	1 SERIES	120i	sport	Q↓
1-214802fv	2014-Current	BMW	2 SERIES	Convertible	m sport	Q↓
1-596188wo	2014-Current	BMW	2 SERIES	Convertible	sport line	Q↓
1-660206xm	2014-Current	BMW	2 SERIES	coupe	m sport	Q↓
1-423627qv	2014-Current	BMW	2 SERIES	coupe	sport line	Q↓
1-681458kn	2014-Current	BMW	2 SERIES	M235	convertible	Q↓

- /5

You can select library, year, make, model,trim level and type, and click the button in the red circle to preview and load it into the software for editing and output.

Plotter Installation

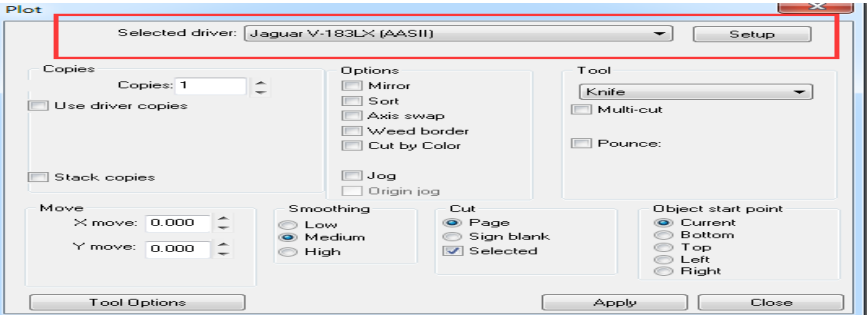
After installation of DCP program,start to install the plotter.blow is the method



- /1

Click [Cut]

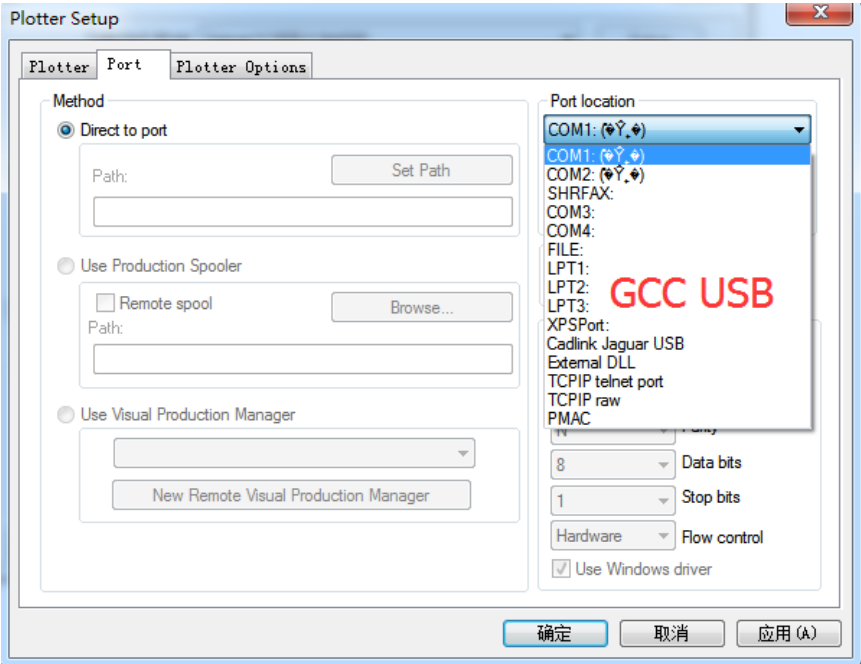
choose [Plotting defaults]



- /2

Select driver of plotter

Click [Setup]



- /3

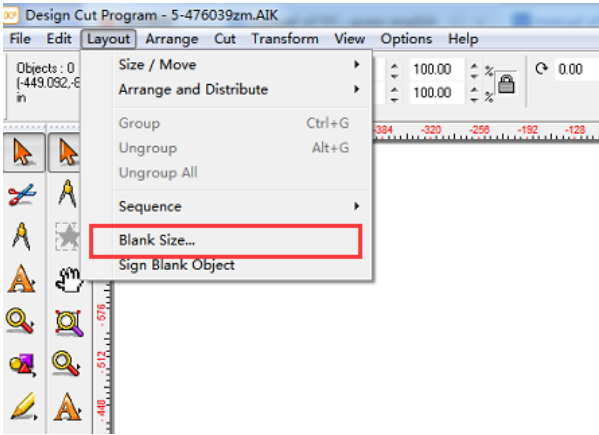
Click [Port]

choose port location

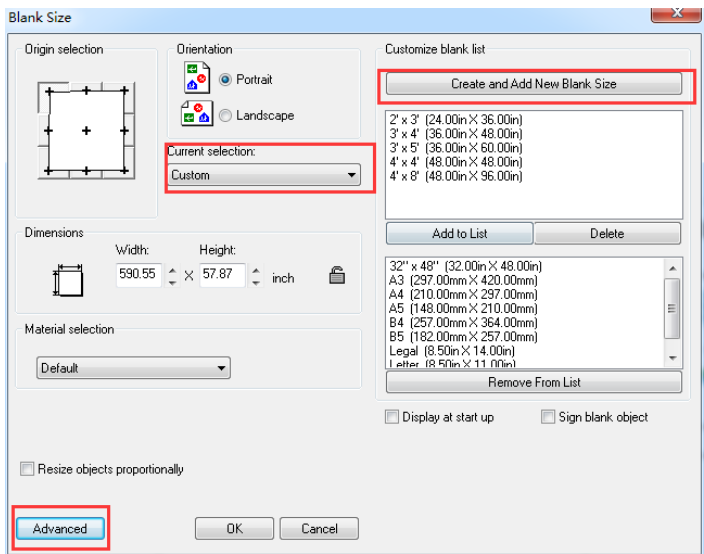
click [Apply]

click [Confirm]

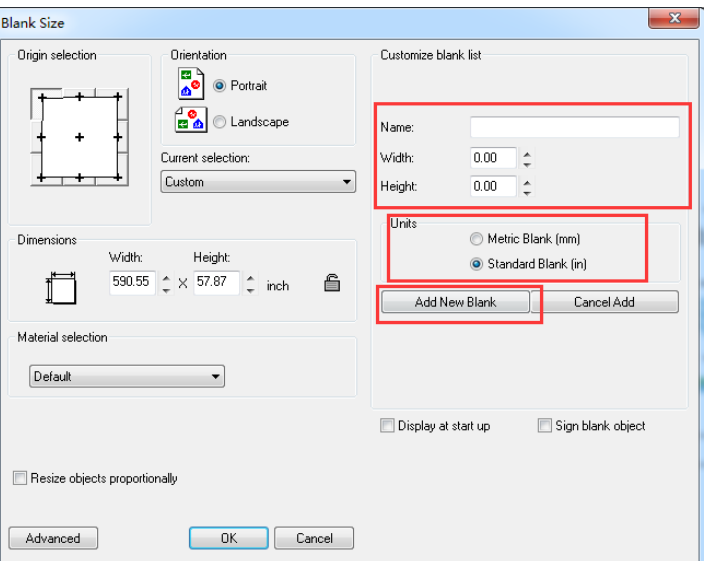
Select width of film



/1 Click [Layout] enter [Blank size]



/2 Click the [Custom] to select the existing Width, or click the "Advanced" to create a new panel, click [Create and New] Add Size]

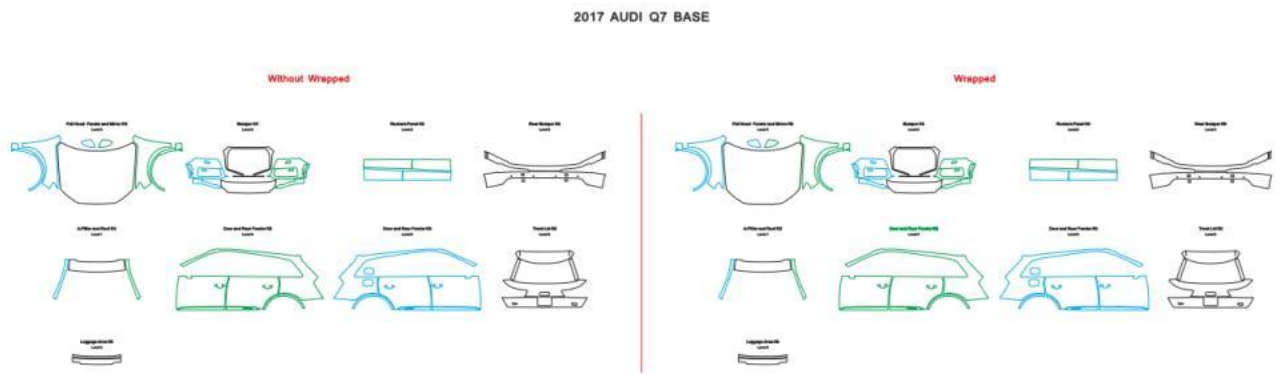


/3 Select [mm], enter name and measurement, click [create new blank] click [ok] to finish

Pattern edition

There are three method:

一、 The designer provides one piece of data with hemming on the right part and the other piece of data without hemming on the left part for you to choose from. We all choose hemming data for cutting, as shown below:



二、 Later we will develop an intelligent wrapping function, selecting colored lines for wrapping.the wrapping value 1CM、 0.75CM、 0.5CM etc can be selected by yourself.

三、 Custom editing

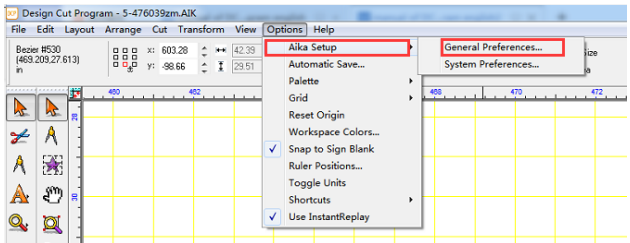
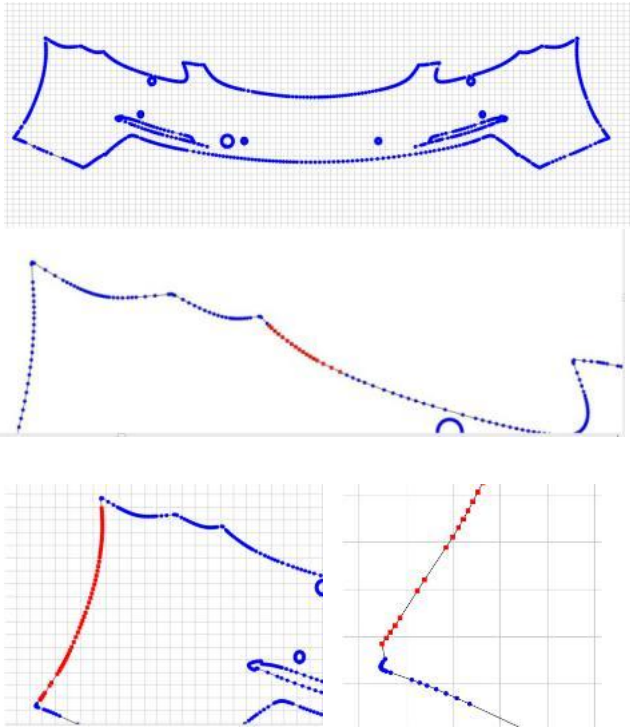
1、 befor edit, press [Ctrl+D] to copy a selected pattern, put the copied pattern into the edition box。

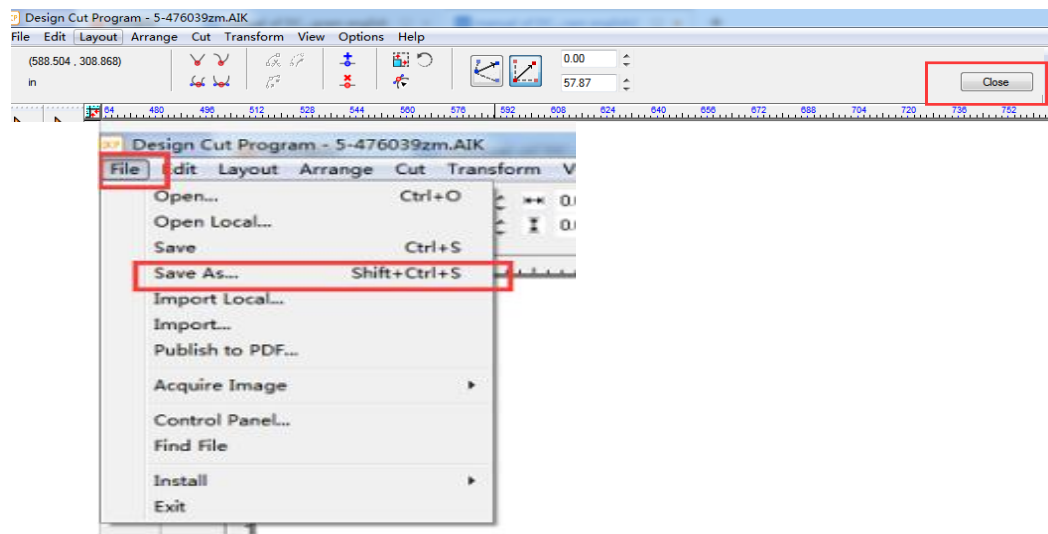
2、 press [Ctrl+E] or double click to edit the pattern (blue frame will be appeared on the selected pattern)

3、 press [Shift], select the part to be edited. (nodes will turn red when selected)。

4、 adjust the nodes direction to be edited with direction key

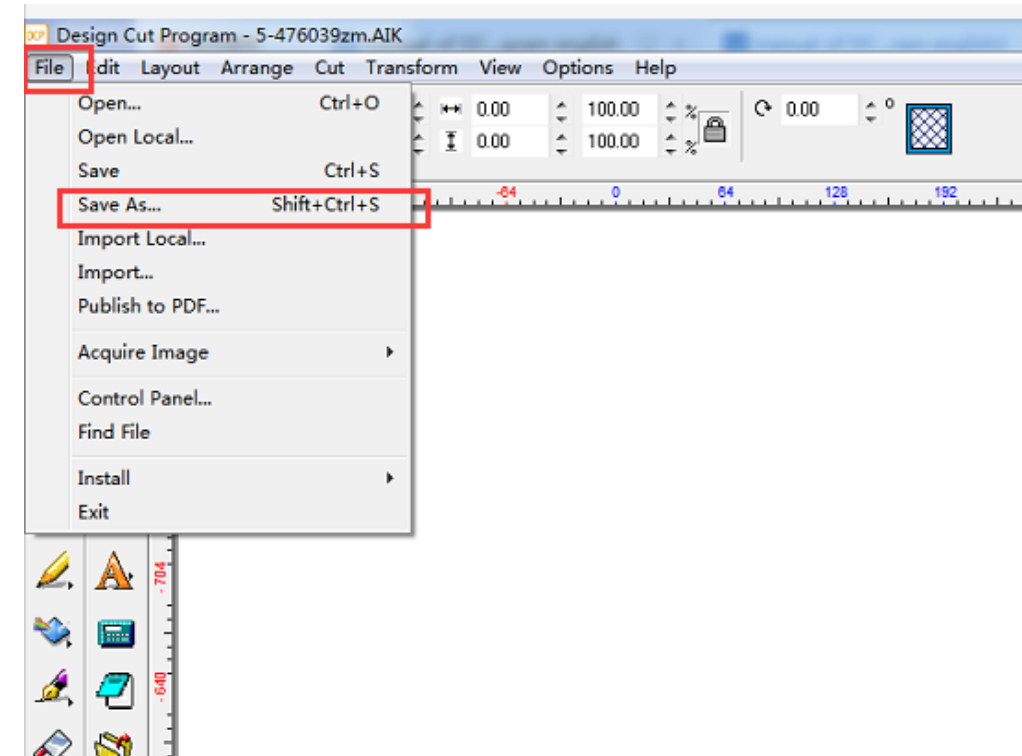
(We can use the grid of the layout to check how many sizes we have moved. The grid is displayed in the black box, and we need to set the size of grid as showed picture.)





Save pattern

Save pattern as below:



5、click [close] to save the edited pattern

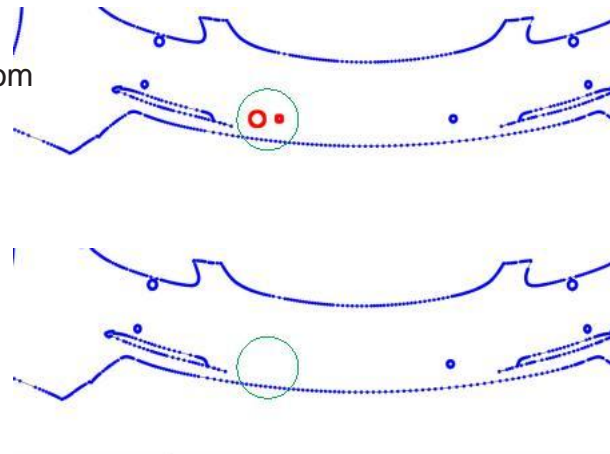
* If you want to save your modified data for later use, you can save another file on your computer

Move delete sensor or logo

Delete unwanted or unneeded part (like logo or sensor):

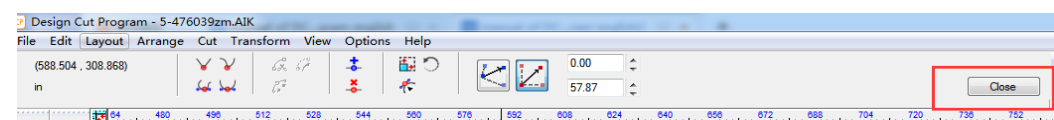
- 1、select the pattern to be edited
- 2、after selecting the pattern, press [Ctrl+E] or double click to edit(blue nodes will be appeared selected pattern).

3、press [Shift], select the part to be edited from the nodes(nodes will turn red after select)



4、after selecting all parts to be deleted,click [Delete]

5、click [close] to save edited pattern



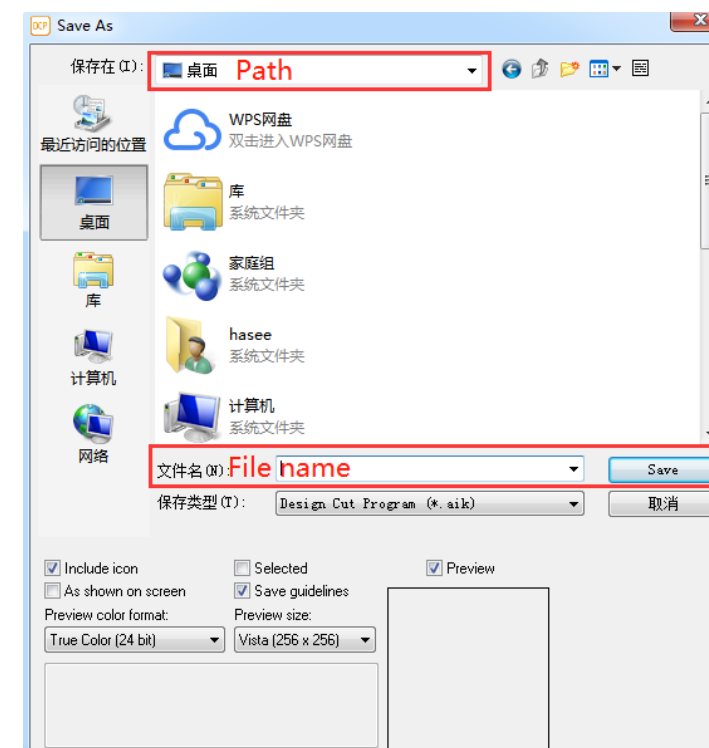
1、clickl [file] and select [save as]

2、name the file

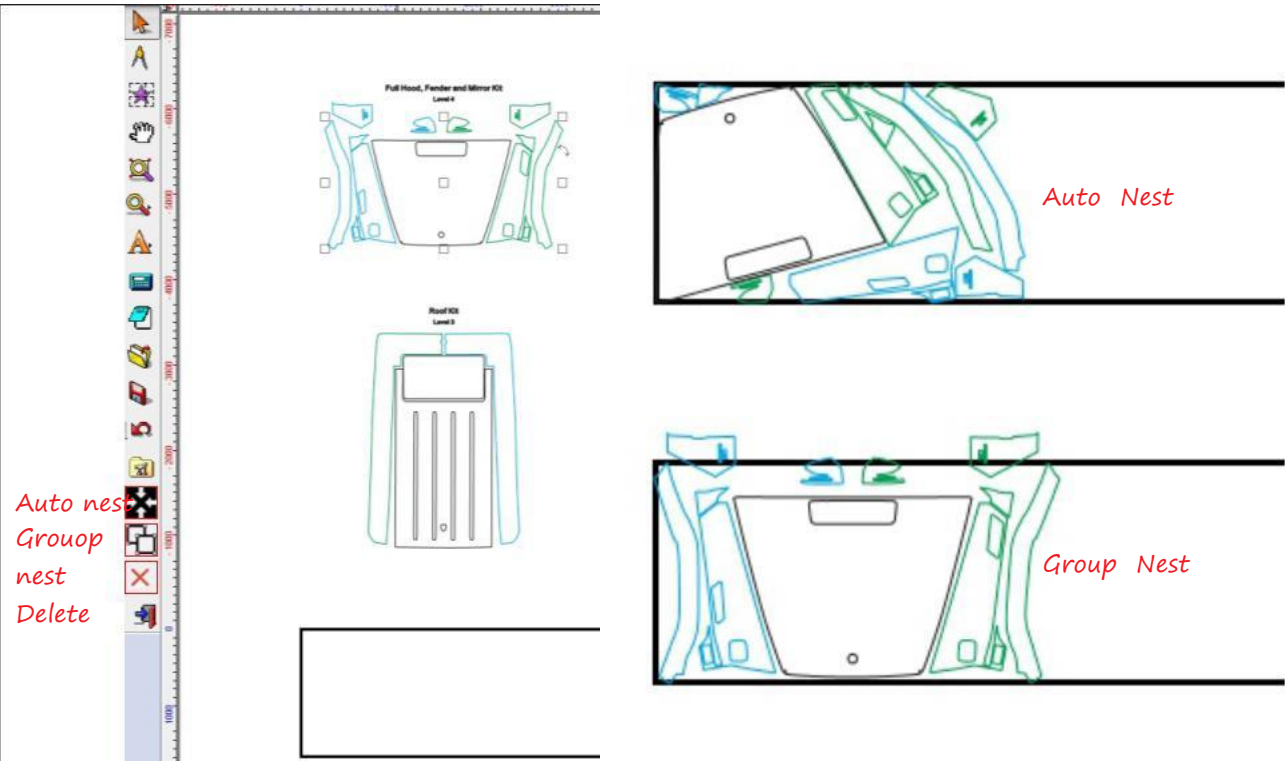
3、Select a path to save the file

4、click [save] to finish

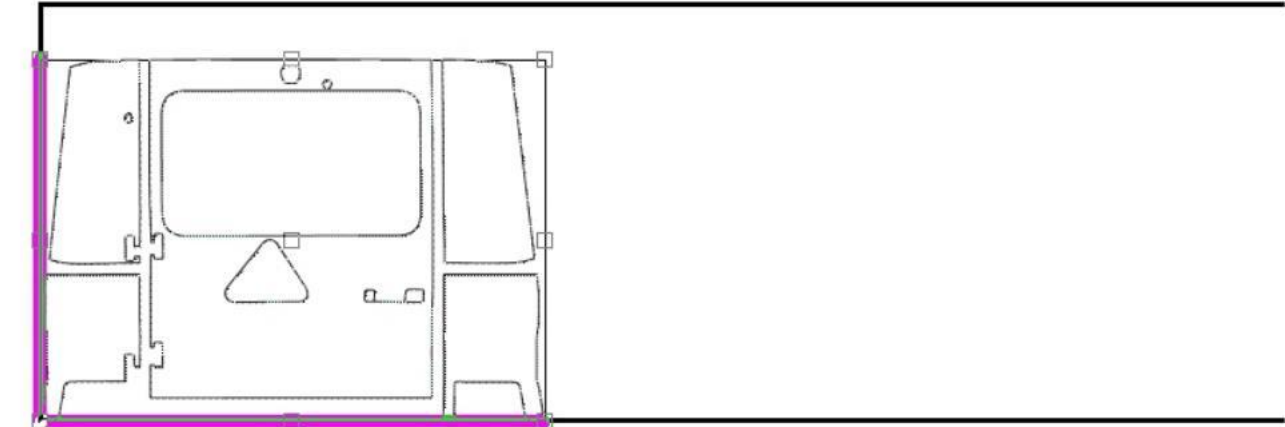
*saving the file is convenient for cutting if there is similar vehicle in the future



Auto typesetting

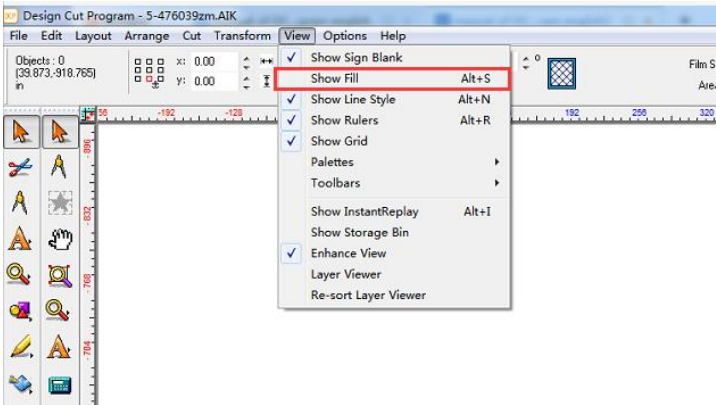


- /1 Select the pattern to be typeset and click [Auto Nest] to do intelligent typesetting
- Select the pattern to be typeset and click [Group Nest] to do group typesetting but can't change the group pattern
- Click [X] to delete all patterns

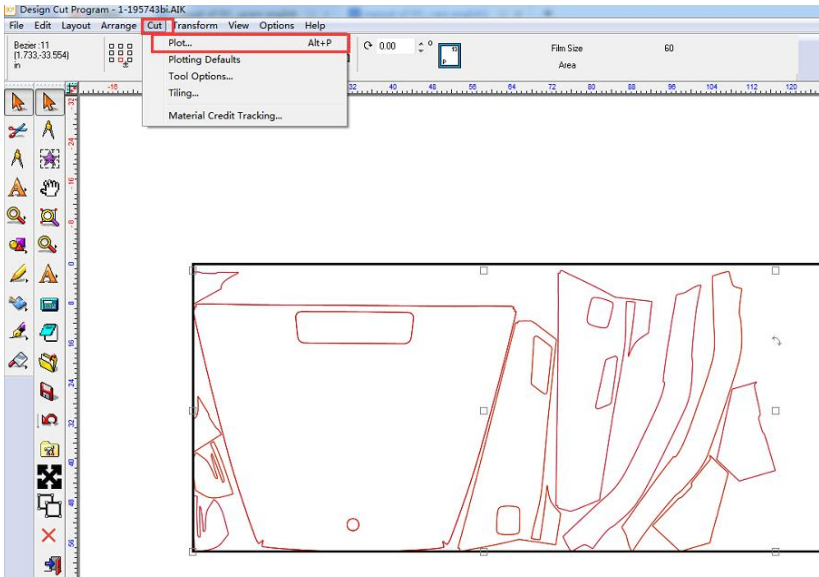


- 2 manually place the pattern into the cutting frame,when the pink line appear,it's closest to the edge of the film.
- Press delete to clear the manual typesetting pattern

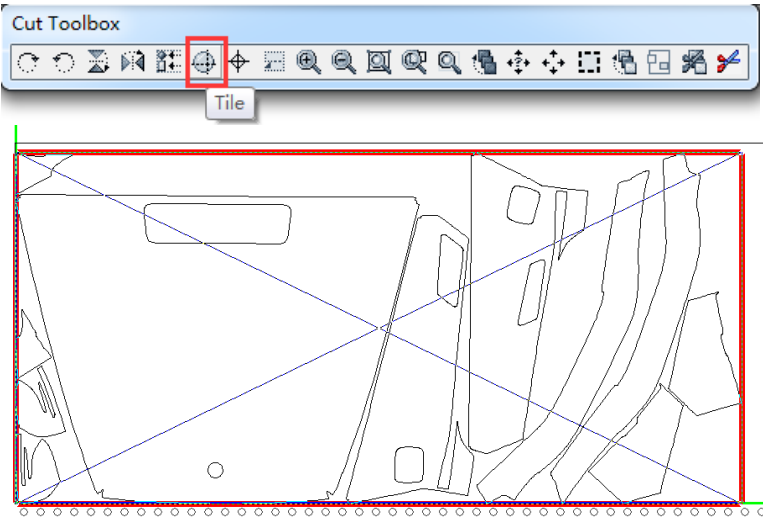
Segmented Output Cut



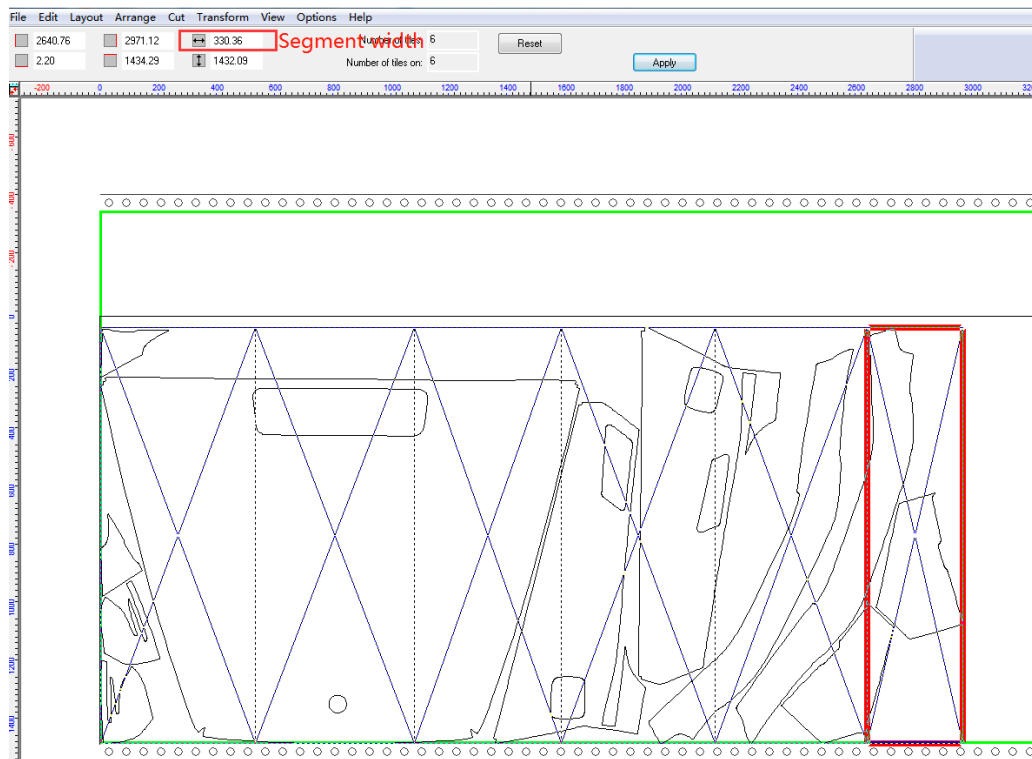
- /1 Cancel "Show File" of View before cut to proceed of segmented cut function



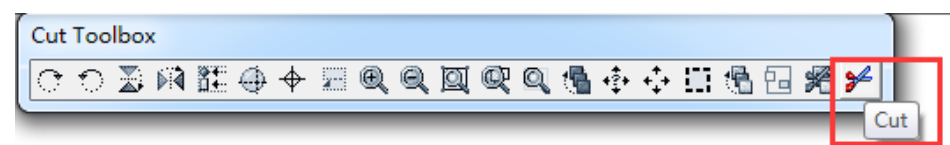
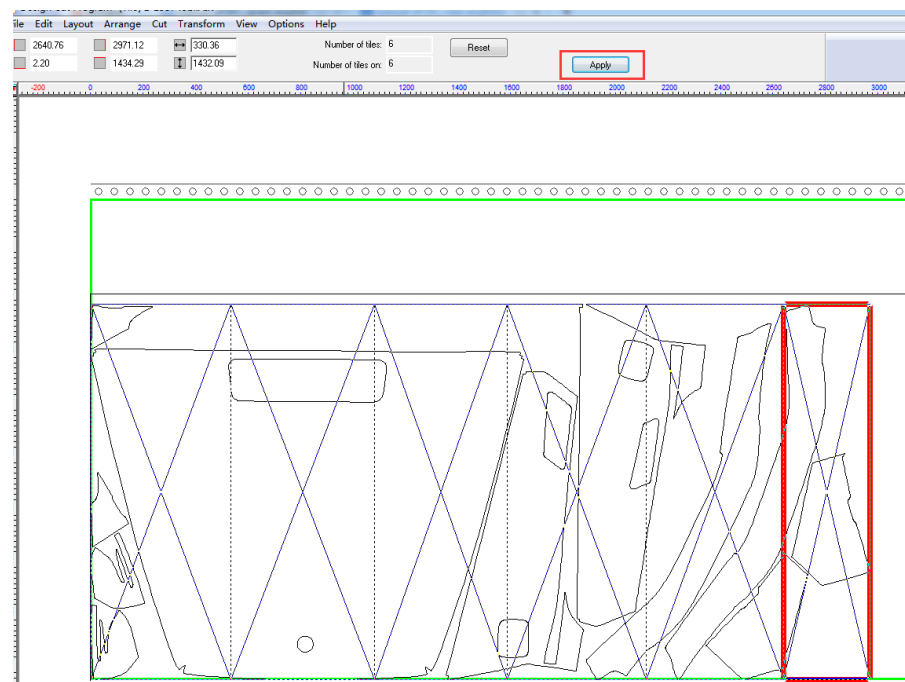
- /2 After selecting typeset pattern in the box click [Plot] of [Cut]



- /3 Click [Tile] of Cut Toolbox, then click the pattern to be cut which will be in red

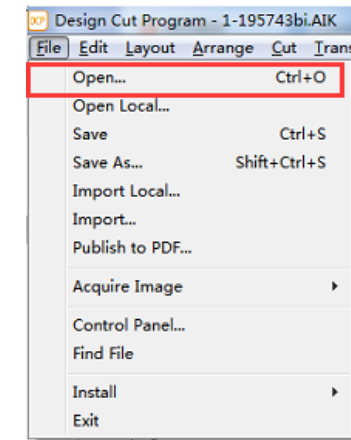


/4 put the cursor at the right of red box,when left and right arrow appears,move the red box to the left. The value of width should be 500-600mm, after finish the cutting of each segmented part ,click next unsegmented part when it's in red box.the last segmented width can be less than 500mm.

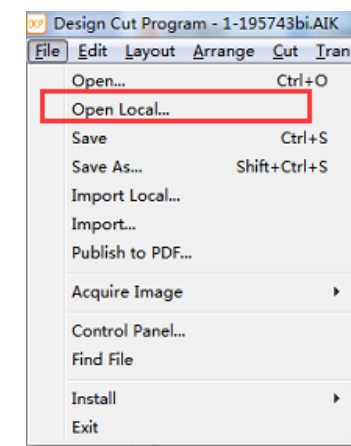


/5 after finish segment,click [Apply] then [Cut]

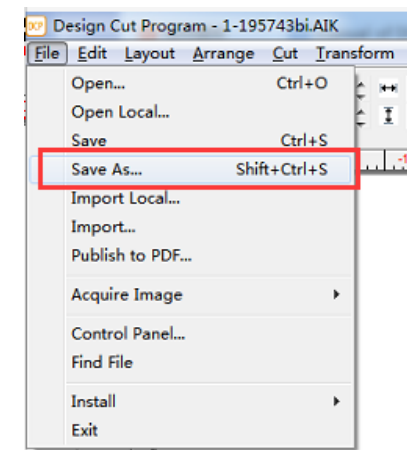
Introduction of partial functional key



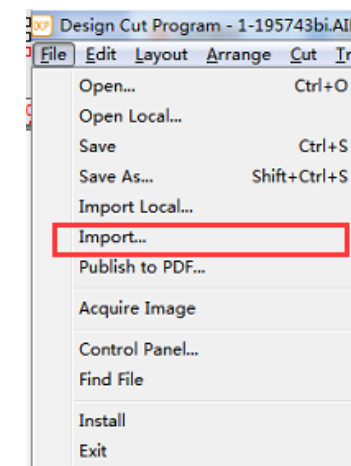
/1 Click [Open] of [File] or open of tools to load a vehicle data from network
Shortcut key Ctrl+ O



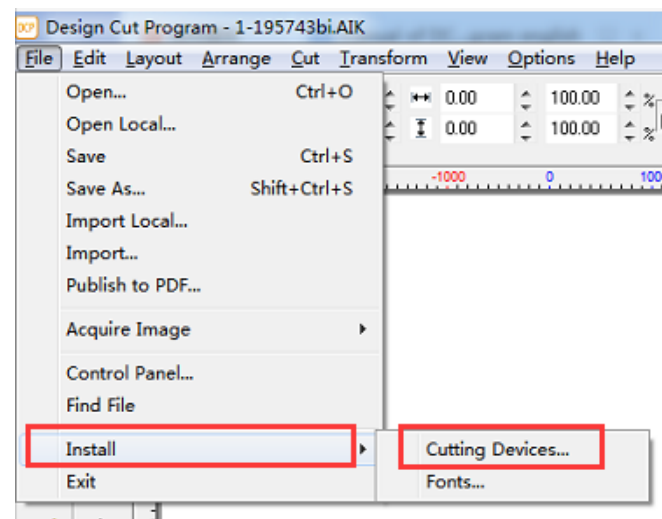
/2 Click [Open Local] of [File] to load a vehicle data from local computer



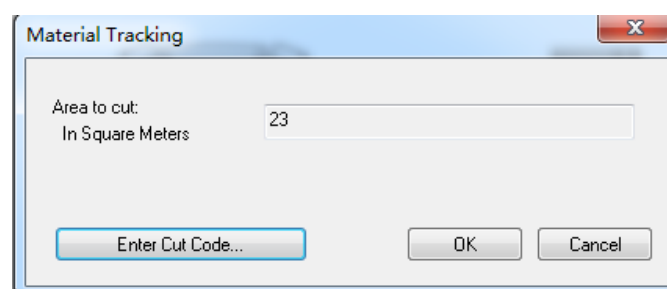
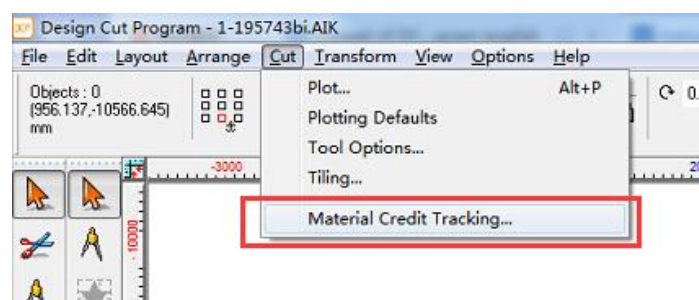
/3 Click [Save As] in [File] to save the vehicle model data to the local computer.



/4 click[Import ...]of [File]to load several vehicle data from network

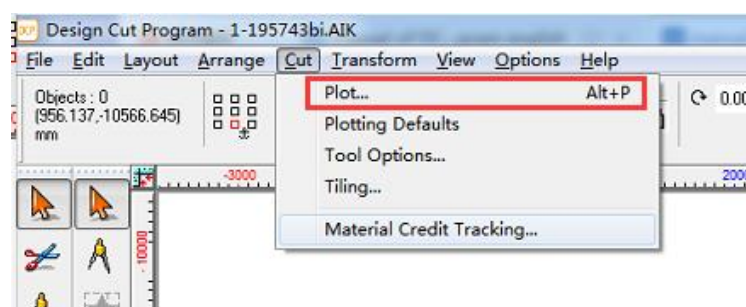
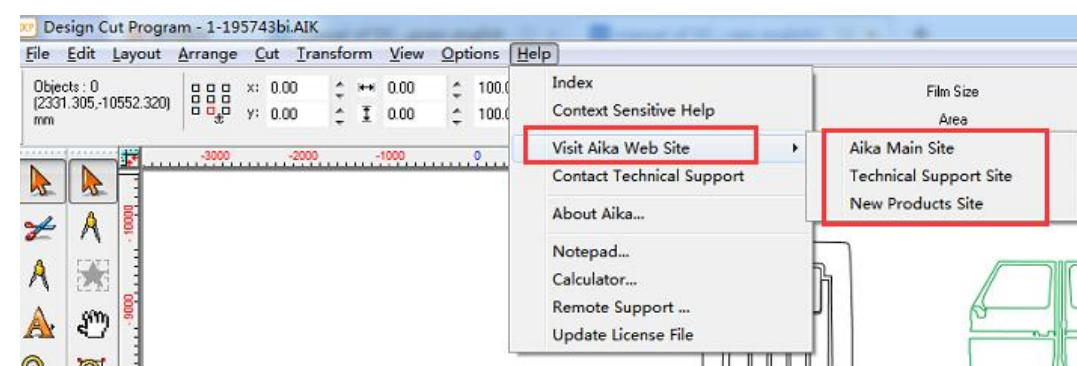


/5 Click [Install] of [file]
And click [Cutting Devices] to install new
plotter

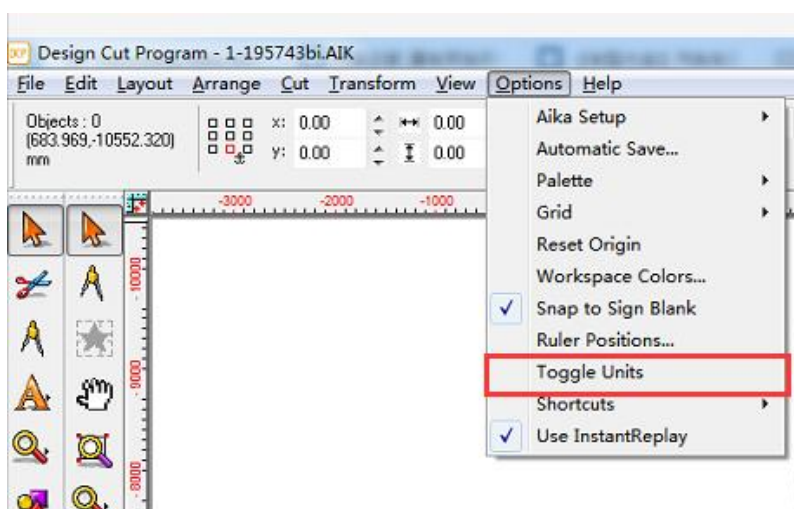


/6 Click "Material Credit Tracking" of "Cut" to
view the remaining cutting area and recharge
area

/9 click[Visit Aika Web Site] of [help] to visit website of
AIKAj Main Site,technical Support Site and New
Products Site



/7 Click [Plot] of [Cut]
to output cut
shortcut key Alt+P



/8 Click [Toggle Units] of [Options]
to change millimetre inch

NOTE

NOTE